

The Aversa Ultra-Fix™ is designed for universal pans and features stainless steel hinges which provide superior strength. Made from thermoset plastic, this seat is long-lasting and offers a ceramic-like shine. The patented Ultra-Fix™ hinge fixing system ensures a perfectly tight installation. The lower portion of the nut shears off when the proper tightness is reached, so you cannot over-tighten.



## SEAT FEATURES



Ultra-Fix™ - patented fixing system that will not loosen! Simple, "no mess" installation ensures your seat stays tight on the pan.

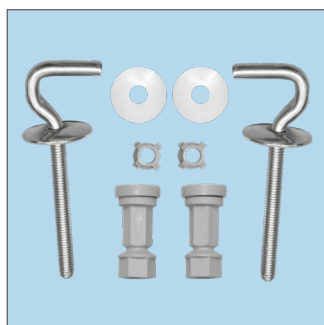


Scratch Resistant - made from hard, Durolux® material that resists scratches.



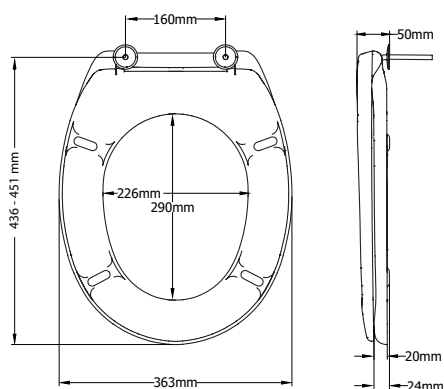
Heat Resistant - High resistance to burns and flames.

- Long-lasting thermoset plastic offers a ceramic-like shine
- Stainless steel hook hinges
- Fits majority of manufacturers' universal shaped pans



## SEAT DIMENSIONS

- Individual seat weight: 1.80 kg
- 7 seats per master carton





## Bemis Ultra-Fix™

The patented hinge fixing system that does not loosen.

### Easy:

One-piece integrated nut

### Fast:

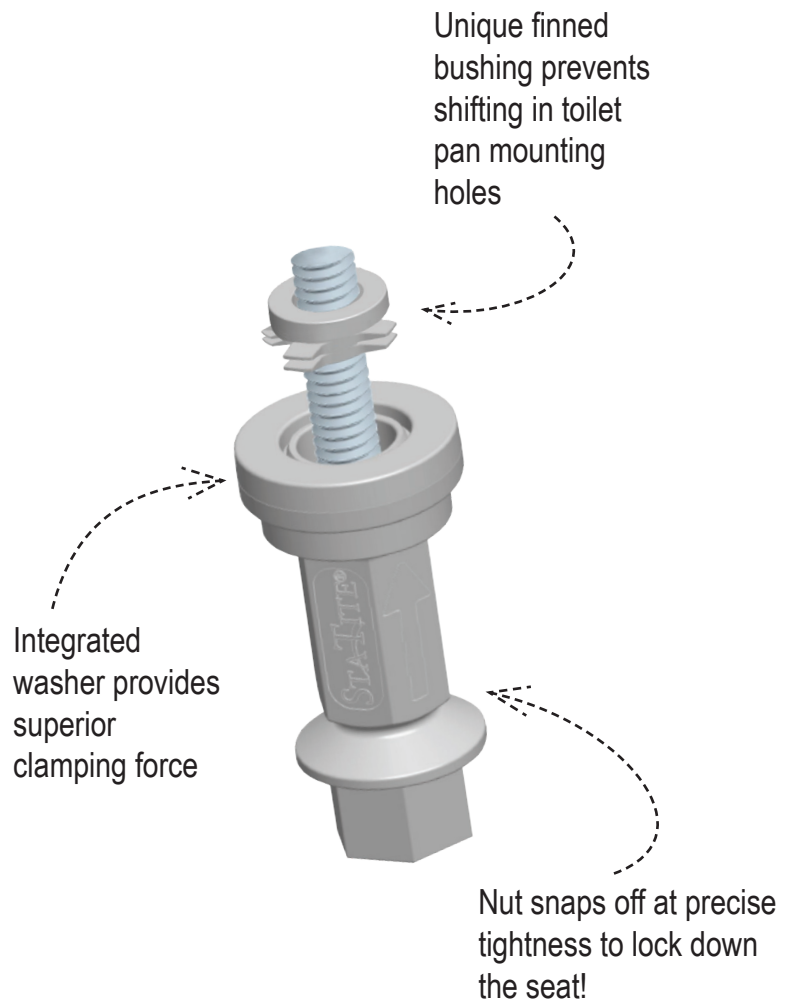
No hassle with glue or adhesives

### Secure:

When the nuts shear off, the seat stays tight

### Effective:

This tried and tested solution will eliminate costly call-backs for loose toilet seats



## Installation is Fast & Easy:

When fitted correctly, the seat will not slip, wobble or shift on the pan. This simple fixing system installs in three basic steps -- no glue required!



Finger Tighten



Tighten with Spanner



Snap to Secure

