



## BEMIS RAPID ULTRA-FIX®

The professional toilet seat fixing system

Highly frequented areas are one of the biggest challenges for toilet seats. Toilet seats fall victim to vandalism or become loose due to heavy use. This costs time and money for replacement or repair.

The patented BEMIS Ultra-Fix® toilet seat fastening system was developed to withstand high pressure and preventing loosening.



Easy installation



Fast fixing



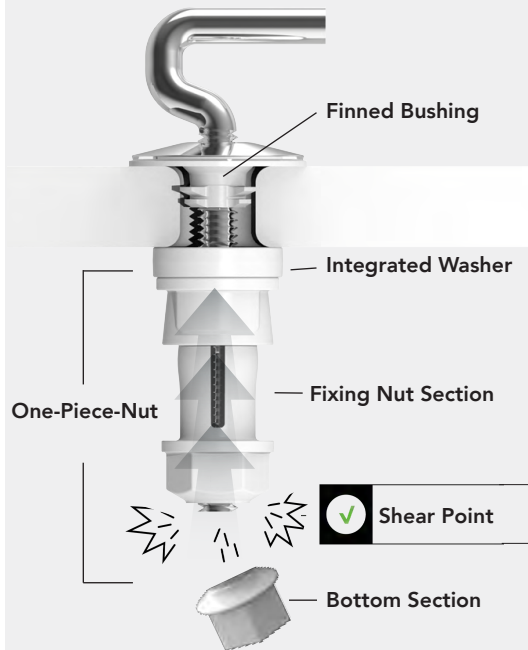
Never loosens



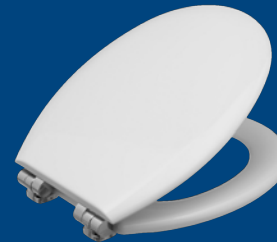
No return calls

## HOW DOES IT WORK?

- 1| The finned bushing eliminates the gap in the toilet mounting hole, preventing hinge movement. The one-piece fixing nut is corrosion resistant and developed to resist high pressure.
- 2| The nut snaps off at the optimum tightening torque creating the perfect clamping force and a seat that does not loosen.
- 3| Bemis toilet seats with the Ultra-Fix® hinge fixing system have gone through vigorous testing, and hold strong and stay tight longer than any other seat.



## APPLICATION AREAS



### HOME

- Private households
- Residential construction
- Office environments (adjustable) stainless steel hinges
- Moulded wood and duroplast



### HOUSING/PROJECTS

- Office buildings
- Residential construction
- Swimming pools & sports facilities
- Schools & administration (adjustable) stainless steel hinges
- Duroplast and thermoplastic



### PUBLIC AREAS

- Office buildings
- Public areas
- Swimming pools & sports facilities
- Schools & administration (adjustable) stainless steel hinges, particularly stable designs
- Duroplast and thermoplastic

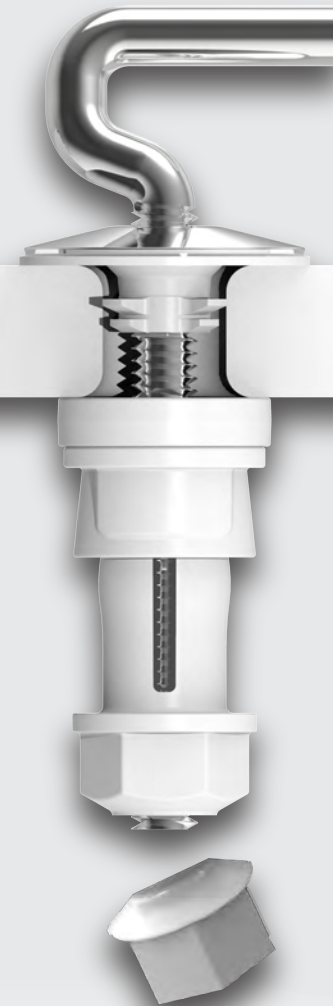


# BEMIS RAPID ULTRA-FIX®

The professional Toilet Seat Fixing System



+44 (0)1282 438 717  
ukcs@bemismfg.com  
www.bemisemea.com



Easy installation



Fast fixing



Never loosens



No return calls

[www.bemisemea.com](http://www.bemisemea.com)